

Thank you for taking the time to download our online parts catalog. When we add new parts to our inventory our catalog will be updated so be sure to check back for the most current catalog.

Due to vendor pricing changes, prices are subject to change without notice. For the most current prices, please be sure to visit our site.

Barstool Racer Supply provides free technical support for the products we sell. If at anytime you have a question about a product you purchase or would like to purchase, feel free to give us a call toll free at 888-755-2380 or you can also send us an email to support@barstoolracersupply.com

Plans



Plans - Classic Cruiser (Adobe PDF)
Modèle BSRP2EM
<p>A Great Gift for the Home Builder</p> <p>We created this new design and plans because of all the requests we have had from people that had purchased our Pro Street Cruiser Barstool Racer Plans, and wanted another cool design. Our thoughts behind this design were to make a Cool Classic Style Barstool Racer that is strong in design and simple to build.</p> <p>The simple design we have come up with is not only easy to assemble, there are only 16 simple steps to build this barstool racer and only 28 parts to build the frame with 5 different angles to cut; all at 45 degrees or less and the steering wheel and column are easily removed for transporting if needed.</p> <p>These plans have been designed so even the first time builder will be able to easily understand how to construct the barstool racer with ease. There are 64 pages of highly detailed, easy to read CAD drawings and 47 of these pages are actual real photos of the build in progress that will aid you in every step of the way.</p> <p>Best of all the frame design is easy to make and cheap to build. The unique square tubing design allows the builder to built it with minimal tools and equipment. If you can cut square tube and weld, you will have no problem building this.</p> <p>We offer a 100% Satisfaction Money Back Guarantee!</p> <p>The plans will be emailed to you within 24 hours after payment has been received.</p> <p>The plans have been converted to Adobe Acrobat for easy reading and printing.</p> <p>If you have any questions there is 24/7 support via email and online at barflyracers.com.</p> <p>A hardcopy version of this manual can be ordered for an additional \$24.95. The plans will be printed on a high quality color laser printer and placed into booklet format for easy use. The additional \$24.95 will cover printing and shipping costs; there are 64 pages total.</p>
9.95 USD



Plans - Classic Cruiser (Hardcopy 62 Pages)
Modèle BSRP2HC
<p>A Great Gift for the Home Builder;</p> <p>We created this new design and plans because of all the requests we have had from people that had purchased our Pro Street Cruiser Barstool Racer Plans, and wanted another cool design. Our thoughts behind this design were to make a Cool Classic Style Barstool Racer that is strong in design and simple to build.</p> <p>The simple design we have come up with is not only easy to assemble, there are only 16 simple steps to build this barstool racer and only 28 parts to build the frame with 5 different angles to cut; all at 45 degrees or less and the steering wheel and column are easily removed for transporting if needed.</p> <p>These plans have been designed so even the first time builder will be able to easily understand how to construct the barstool racer with ease. There are 64 pages of highly detailed, easy to read CAD drawings and 47 of these pages are actual real photos of the build in progress that will aid you in every step of the way.</p> <p>Best of all the frame design is easy to make and cheap to build. The unique square tubing design allows the builder to built it with minimal tools and equipment. If you can cut square tube and weld, you will have no problem building this.</p> <p>We offer a 100% Satisfaction Money Back Guarantee!</p> <p>The plans are printed on a high quality color laser printer and placed into booklet format for easy use.</p> <p>If you have any questions there is 24/7 support via email and online at BarFlyRacers.com.</p>
26.95 USD



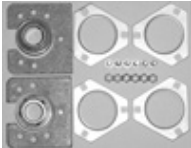
Plans - Pro Street Cruiser (Adobe PDF)
Modèle BSRP1EM
<p>A Great Gift for the Home Builder;</p> <p>If you are looking for a Pro Street Look in a Barstool Racer, then these plans are for you.</p> <p>These plans have been designed so even the first time builder will be able to easily understand how to construct the barstool racer with ease. There are 67 pages of highly detailed, easy to read CAD drawings and 48 of these pages are actual real photos of the build in progress that will aid you in every step of the way.</p> <p>Best of all the frame design is easy to make and cheap to build. The unique square tubing design allows the builder to built it with minimal tools and equipment. If you can cut square tube and weld, you will have no problem building this.</p> <p>We offer a 100% Satisfaction Money Back Guarantee!</p> <p>The plans will be emailed to you within 24 hours after payment has been received.</p> <p>The plans have been converted to Adobe Acrobat for easy reading and printing.</p> <p>If you have any questions there is 24/7 support via email and online at BarFlyRacers.com.</p> <p>A hardcopy version of this manual can be ordered for an additional \$24.95. The plans will be printed on a high quality color laser printer and placed into booklet format for easy use. The additional \$24.95 will cover printing and shipping costs; there are 67 pages total.</p>
9.95 USD



Plans - Pro Street Cruiser (Hardcopy 62 Pages)
Modèle BSRP1HC
<p>A Great Gift for the Home Builder;</p> <p>If you are looking for a Pro Street Look in a Barstool Racer, then these plans are for you.</p> <p>These plans have been designed so even the first time builder will be able to easily understand how to construct the barstool racer with ease. There are 67 pages of highly detailed, easy to read CAD drawings and 48 of these pages are actual real photos of the build in progress that will aid you in every step of the way.</p> <p>Best of all the frame design is easy to make and cheap to build. The unique square tubing design allows the builder to built it with minimal tools and equipment. If you can cut square tube and weld, you will have no problem building this.</p> <p>We offer a 100% Satisfaction Money Back Guarantee!</p> <p>The plans are printed on a high quality color laser printer and placed into booklet format for easy use.</p> <p>If you have any questions there is 24/7 support via email and online at BarFlyRacers.com.</p>
26.95 USD



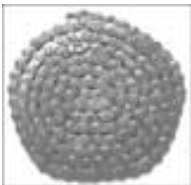
Bearing Hanger 3 Hole for 1" Axle
Modèle 8127
This bearing hanger is designed to be used with a 1" rear axle setup and will adapt to either the two or three hole rear bearing flangettes.
They are made from 1/4" steel and will require welding to the frame.
If you are building a new frame you will need two of these.
3.02 USD



Bearing Kit for 1" Live Axles
Modèle 1861-3
This kit includes everything you need to assemble a live axle to your frame except the live axle.
The thick steel bearing hangers are designed to adapt to either the two or three hole bearing flangettes.
For very long axles, an additional bearing hanger may be needed.
23.48 USD



Bearing Rear for 1" Axle
Modèle 8211
This is the standard 1" rear axle bearing for barstool racers or go karts.
6.40 USD



Chain #35 - 5 Feet
Modèle 4008-5
Our #35 Roller Chain comes in 5' lengths. These chains will great for Barstool Racers, Go-Karts, Jr. Dragsters and Mini Bikes.
Usually one 5' length will be enough when building a bar stool racer.
Additional items you may need: Master Link. Part No. 4009 Offset Link. Part No. 4010
8.67 USD



Chain #35 Master Link
Modèle 4009
#35 Chain Master Link, one per package.
The master link is used to join both end of the chain together.
1.07 USD



Chain #35 Offset Link
Modèle 4010
#35 Chain, Offset Link comes 1 per package.
The Offset Link is used when you need a little extra length in the chain to correctly adjust the chain tension.
We recommend ordering one when you order any chain, just in case you run into a problem adjusting the chain tension you will have the solution.
1.72 USD



Chain #41 - 5 Feet
Modèle 4023-5
Our #41 Roller Chain comes in 5' lengths. These chains will great for Barstool Racers, Go-Karts, Jr. Dragsters and Mini Bikes.
Usually one 5' length will be enough when building a bar stool racer.
Additional items you may need: Master Link. Part No. 4024 Offset Link. Part No. 4025
9.67 USD



Chain #41 Master Link
Modèle 4024
#41 Chain Master Link, one per package.
The master link is used to join both end of the chain together.
1.07 USD




Chain #41 Offset Link
Modèle 4025
#41 Chain, Offset Link comes 1 per package.
The Offset Link is used when you need a little extra length in the chain to correctly adjust the chain tension.
We recommend ordering one when you order any chain, just in case you run into a problem adjusting the chain tension you will have the solution.
1.72 USD



Deluxe Parts Kit
Modèle 901
Save yourself time and money with our Deluxe Parts kit!
Our Dexlue Parts Kit comes with everything you need to finish off your Barstool Racer if you had purchased a Barstool Racer Frame Kit from us. All the parts needed are in this kit except the following:
The Engine The Barstool The Rims and Tires The Clutch / TAV Steering Shaft & Handle Bar (included in our frame kit)
This parts kit was put together for a person that has purchased or is going to purchase a Barstool Racer Frame Kit from us. The only difference in this kit from the Master Parts Kit, is the parts that already come with our frame kits are not included with this kit.
If you already have your frame or you are going to build your own frame, we recommend getting our Master Parts Kit #900. The Master Parts Kit contains additional parts that the Deluxe Kit does not have.
324.90 USD



Engine Mount Plate 5" X 12"
Modèle 8190
This engine mount plate is 5" X 12" in size and 1/8" thick and is made from mild steel. The mounts slots will work with Briggs, Tecumseh and Honda Engines.
6.89 USD

	Keystock 1/4" X 6"
	Modèle 8403-6
	Our 1/4" Key Stock comes in 6" lengths. Use this key stock for your rear axles items, such as sprockets, brake hubs and rear wheel hubs. Usually 6" will get you buy when setting up a rear axle, if you are unsure order two peices to be safe.
	1.60 USD



	Lock Collar Steel for 1" Axle
	Modèle 8557
	This is a 2 piece steel lock collar and will fit all 1" live axles. Because of the 2 piece design, you can add or remove the collar from the axle by simply removing the two holding screws. The reason for having a lock collar is to assure no movement of parts on your rear axle. The most common use for the lock collars are for the rear sprocket, brake disc and to help hold your rear axle in place. If you are building a bar stool racer, we recommend using at least two of the lock collars for your drive sprocket. Even if you have set screws to hold the sprocket in place, they do have a tendency to come lose. You will need two, one for each side on the sprocket.
	3.65 USD



	Master Parts Kit
	Modèle 900
	Save yourself time and money with our Master Parts kit! Our Master Parts Kit comes with everything you need to build a Barstool Racer except for the following: The Engine The Barstool The Rims and Tires The Clutch / TAV Steering Shaft & Handle Bar This is out most complete parts kit and we recommend using this kit if you already have a barstool racer frame or you are going to build you own frame. If you would like to use a T style steering wheel you can add our 5/8" Steering Shaft #112 and our 7/8" Steering Handle Bar #115 to your order. If you are purchasing a Barstool Racer Frame Kit from us, we have created a special parts kit called the Deluxe Parts Kit #901. The only difference with the Deluxe Parts Kit is that the frame kit already comes with some of the parts included in the Master Parts Kits and we have removed those parts from the Deluxe Parts Kit to save you money.
	335.27 USD



Sprocket 40 Tooth #41 Chain (4.00" Bolt Circle)
Modèle 531440
Made from 7075-T6 Aluminum, this sprocket is ideal for larger sized engines when you want to get maximum speed. We recommend using this sprocket with an engine that has a minimum of 5.5 HP. Your best speeds will be obtained when used in conjunction with a Tork-A-Verter.
Specifications: 4" Bolt Circle - (4) 5/16" Holes Fits our Hub 1" Bore #2286
24.60 USD



Sprocket 40 Tooth #41 Chain (5.25" Bolt Circle)
Modèle 40T525
Made from 7075-T6 Aluminum, this sprocket is ideal for larger sized engines when you want to get maximum speed. We recommend using this sprocket with an engine that has a minimum of 5.5 HP. Your best speeds will be obtained when used in conjunction with a Tork-A-Verter.
We also sell this sprocket in a split style, part number 40T525S
Specifications: Chain Size #41 Teeth 405.25" Bolt Circle - (6) 1/4" Bolt Holes Inside Diameter 4.563"
24.60 USD



Sprocket 54 Tooth #41 Chain (4.00" Bolt Circle)
Modèle 54T101ASP
Made from 7075-T6 Aluminum, this sprocket is ideal for medium sized engines when you want to get maximum speed.
We recommend using this sprocket with an engine that has a minimum of 4.5 HP. Your best speeds will be obtained when used in conjunction with a Tork-A-Verter.
Specifications: Chain Size #41 Teeth 544" Bolt Circle - (4) 5/16" Holes Fits our Hub 1" Bore #2286
41.98 USD



Sprocket 54 Tooth #41 Chain (5.25" Bolt Circle)
Modèle 54T525
Made from 7075-T6 Aluminum, this sprocket is ideal for medium sized engines when you want to get maximum speed.
We recommend using this sprocket with an engine that has a minimum of 4.5 HP. Your best speeds will be obtained when used in conjunction with a Tork-A-Verter.
We also sell this sprocket in a split style, part number 54T525S
Specifications: Chain Size #41 Teeth 545.25" Bolt Circle - (6) 1/4" Bolt Holes Inside Diameter 4.563"
35.69 USD



Sprocket Hub Heavy Duty - 1" Axle
Modèle 2286
This hub is great for live axles. The hub will fit any 1" axle. This hub will work with our 40 Tooth Sprocket #531440 and our 54 Tooth Sprocket #54T101ASP. Specifications:4" Bolt Circle (4) 5/16" HolesZinc PlatedGrade 5 Bolts, Lock Nuts & Set Screws Included. Don't forget you will need some 1/4" key stock for the hubPart Number: 8403-6
16.77 USD



Wheel Hub Bolt Kit - 1/4" Front
Modèle 104
This bolt kit is the standard 1/4" bolt kit that will fit most popular front wheel hubs including, Van-K, Douglas, Burris, Circle and more. The kits comes with:3 X 1/4" Wheel Studs3 X 1/4" Wheel Stud Nuts.
1.35 USD



Wheel Hub Bolt Kit - 1/4" Rear
Modèle 105
This bolt kit is the standard 1/4" bolt kit that will fit most popular rear wheel hubs including, Van-K, Douglas, Burris, Circle and more. The kits comes with:3 X 1/4" Wheel Studs3 X 1/4" Wheel Stud Nuts.1 X 5/16" Hub Tightening Bolt
1.65 USD



Wheel Hub Front 5/8"
Modèle 103
Our Front Hubs are CNC machined from 6061 T-6 aluminum for strength and accuracy. The hubs have a 2-1/4" bolt circle to fit Circle, Van-K, Douglas and other popular rims that have the standard U.S. pattern. The hubs come with the 5/8" bearings installed and the standard 1/4" bolt kit to fasten your rims to the hubs. These hubs will fit perfectly with any of the front spindles or spindle kits we sell.
17.54 USD



Wheel Hub Kit 1" X 5/8"
Modèle H103K
Our Wheel Hub Kits are CNC machined from 6061 T-6 aluminum for strength and accuracy. The hubs have a 2-1/4" bolt circle to fit Circle, Van-K, Douglas and other popular rims that have the standard U.S. pattern. This kit includes:2 - Front 5/8" Hubs2 - Rear 1" Hubs4 - Wheel Hub Bolt Kits The Front Hubs come with the 5/8" bearings installed and the Rear Hubs will fit any 1" axle. The Front hubs will fit perfectly with any of the front spindles or spindle kits we sell. If you're building a new Barstool Racer or Go-Kart, this kit is your best value and includes everything you need to mount all 4 wheels.
59.50 USD



Wheel Hub Rear 1"
Modèle 102
Our Rear Hubs are CNC machined from 6061 T-6 aluminum for strength and accuracy. The hubs have a 2-1/4" bolt circle to fit Circle, Van-K, Douglas and other popular rims that have the standard U.S. pattern. This hub will fit any 1" axle and comes with the standard 1/4" bolt kit to fasten your rims to the hubs.
15.54 USD

Drive Train -/- 1-1/4" Drive Train



Wheel Hub Kit 1-1/4" X 5/8"
Modèle H104K
Our Wheel Hub Kits are CNC machined from 6061 T-6 aluminum for strength and accuracy. The hubs have a 2-1/4" bolt circle to fit Circle, Van-K, Douglas and other popular rims that have the standard U.S. pattern.
This kit includes: 2 - Front 5/8" Hubs 2 - Rear 1-1/4" Hubs 4 Wheel Hub Bolt Kits
The Front Hubs come with the 5/8" bearings installed and the Rear Hubs will fit any 1-1/4" axle. The Front hubs will fit perfectly with any of the front spindles or spindle kits we sell.
If you're building a new Barstool Racer or Go-Kart, this kit is your best value and includes everything you need to mount all 4 wheels.
59.50 USD



Wheel Hub Rear 1-1/4"
Modèle 104
Our Rear Hubs are CNC machined from 6061 T-6 aluminum for strength and accuracy. The hubs have a 2-1/4" bolt circle to fit Circle, Van-K, Douglas and other popular rims that have the standard U.S. pattern.
This hub will fit any 1-1/4" axle and comes with the standard 1/4" bolt kit to fasten your rims to the hubs.
15.54 USD

Steering



Brake Cable & Housing 60"
Modèle 1752
The cable is 60" in length, .075" diameter, with a 3/8" barrel on one end. The cable housing is 55" in length.
This brake cable has been design to work with our Hand Brake, Part Number: 1731
3.47 USD



Brake Lever Heavy Duty 7/8"
Modèle 1731
This rugged hand brake lever is stamped and shaped mild steel. Unlike cast handles these will bend rather than fracture. The split mounting collar is strong yet narrow to allow its positioning closer to curves and bends in handle bars.
This brake lever will work great on barstool racers with a steering handle bar.
The Heavy Duty Brake Lever will work great with our 5/8" X 36" Steering Kits, Part Number: STKIT1 or any 7/8" handle bar.
10.97 USD



Deluxe Parts Kit
Modèle 901
Save yourself time and money with our Deluxe Parts kit!
Our Deluxe Parts Kit comes with everything you need to finish off your Barstool Racer if you had purchased a Barstool Racer Frame Kit from us. All the parts needed are in this kit except the following:
The Engine The Barstool The Rims and Tires The Clutch / TAV Steering Shaft & Handle Bar (included in our frame kit)
This parts kit was put together for a person that has purchased or is going to purchase a Barstool Racer Frame Kit from us. The only difference in this kit from the Master Parts Kit, is the parts that already come with our frame kits are not included with this kit.
If you already have your frame or you are going to build your own frame, we recommend getting our Master Parts Kit #900. The Master Parts Kit contains additional parts that the Deluxe Kit does not have.
324.90 USD



Kingpin & Nut 5/8" 18 X 3-3/4"
Modèle 8447
Kingpin Bold with Nut.
Will fit all 5/8" spindles.
1.65 USD



Lock Collar Steel 5/8"
Modèle 8555
Our 5/8" Locking Collar is made from steel and can be used to position the front wheels on the wheel spindles or a steering shaft in place.

1.43 USD



Master Parts Kit
Modèle 900
Save yourself time and money with our Master Parts kit!
Our Master Parts Kit comes with everything you need to build a Barstool Racer except for the following: The Engine The Barstool The Rims and Tires The Clutch / TAV Steering Shaft & Handle Bar
This is out most complete parts kit and we recommend using this kit if you already have a barstool racer frame or you are going to build you own frame.
If you would like to use a T style steering wheel you can add our 5/8" Steering Shaft #112 and our 7/8" Steering Handle Bar #115 to your order.
If you are purchasing a Barstool Racer Frame Kit from us, we have created a special parts kit called the Deluxe Parts Kit #901. The only difference with the Deluxe Parts Kit is that the frame kit already comes with some of the parts included in the Master Parts Kits and we have removed those parts from the Deluxe Parts Kit to save you money.
335.27 USD



Pitman Arm 5/8"
Modèle 8129
Steering Pitman Arm, great for barstool racers and go karts.
The pitman arm is used to hook your tie rods end into for steering. The pitman arms comes with a 5/8" hole for the steering shaft and a 5/16" hole for the tie rod end bolts. If needed, the 5/16" hole can be drilled out to accomadate tie rods with a 3/8" bolt hole.
The pitman arms works with the standard 5/8" steering shafts and will require weding to the shaft.
On a barstool racer you can usually use one pitman arm to connect both tie rod ends to.
1.49 USD



Spindle Arm Side 1
Modèle 2237
Spindle Arm for side 2.
The spindle arm is setup for a 5/8" King Pin and is Jig-welded for consistency.
10.39 USD



Spindle Kit Sides 1-2
Modèle 223536K
This kit has all the parts you need to mount both steering spindles on your barstool racer or go kart. The kits come complete with the spindle mount bracket, spindle, king pin and nut, spindle spacer and spindle nut. Specs: 5/8" X 4 1/2" If you are building a new frame, then this kit is your best value.
26.78 USD



Steering Handle Bar 7/8"
Modèle 115
Our 7/8" Steering Handle Bars come in lengths of 21" which is a standard when building a barstool racer the a T style steering system. The handle bar is made from steel tubing, NOT iron pipe. Custom lengths are available, if you need a custom length please email or call us.
7.10 USD



Steering Kit - 5/8" X 36"
Modèle 110K
This steering kit come with everything you need to put together your steering system. The shaft is made from 5/8" solid steel rod and comes 36" in length and the handle bar is made from 7/8" steel tubing. We have also include the pitman arm to finish off the kit. The kit comes unwelded. Custom lengths are also available, please call for pricing. Depending on on your setup, you may also need a 5/8" Locking Collar to lock the steering shaft in from moving. The part number for the locking collar is 8555.
13.83 USD



Steering Shaft - 5/8" X 36"
Modèle 112
This steering shaft is the standard 5/8" solid shaft found on many barstool racers and go karts. The shaft come in 36" lengths and has no splines or threads on either end. If you are making a custom steering setup, then this shaft is the best way to go. Custom lengths also available, please call for pricing.
6.87 USD



Throttle Assembly Kit 7/8"
Modèle 2352
The throttle assembly kit comes with a 54" flexible throttle cable covered by spiral steel, vinyl covered housing. They feature crome plated mounting cases and self-lubricating bearing surfaces for long trouble-free service. The throttle asembly kit will work great with our 5/8" X 36" Steering Kits, Part Number: STKIT1 or any 7/8" handle bar.
21.61 USD



Tie Rod 9.0" - Tubular Steel
Modèle 1849-09
<p>This part replaces our 7-7/8" Tubular Aluminum Tie Rod (387-778), which were used for the Classic Cruiser and Pro Street Cruiser tie rods.</p> <p>This tie rod has been designed to fit both our Pro Street Cruiser and Classic Cruiser Barstool Racer Designs when using a frame width of 15" to 17".</p> <p>This tie rod is made from 5/16" tubular steel and is chrome plated. When building a barstool racer or go-kart, one of the most important parts are the steering tie rods.</p> <p>This tie rod can also be used in other applications. The steel tube is 9.0" long and has 2.0" of thread on each end so you can shorten if needed. For other applications, you just need to take a few measurements from your steering spindle arm bolt hole to your pitman arm bolt hole and compare them with the "Rod End Hole-to-Hole" measurements in the product details below.</p> <p>If you are building a new barstool racer or go-kart, you will need two tie rods (one for each side).</p> <p>Product Details: Tube Length: 9.0" Minimum Length Rod End Hole-to-Hole Center: 10-1/2" Maximum Length Rod End Hole-to-Hole Center: 12.0" (leaving 3/8" threading inside tube for safe operation)</p>
16.19 USD



Wheel Hub Front 5/8"
Modèle 103
<p>Our Front Hubs are CNC machined from 6061 T-6 aluminum for strength and accuracy. The hubs have a 2-1/4" bolt circle to fit Circle, Van-K, Douglas and other popular rims that have the standard U.S. pattern.</p> <p>The hubs come with the 5/8" bearings installed and the standard 1/4" bolt kit to fasten your rims to the hubs.</p> <p>These hubs will fit perfectly with any of the front spindles or spindle kits we sell.</p>
17.54 USD

Brake Componets



Brake & Caliper Kit for 1" Axle
Modèle 21797K
Great for Barstool Racers and Go Karts. The mechanical brake caliper will give you excellent stopping power for much less than a hydraulic braking system.
To make installation fast and easy, we have included an extended bolt kit, brake cable return spring and brake cable retainer.
Installation is simple, just mount the caliper and hook of the brake cable. No need to bleed brake lines because it is mechanical.
Parts in the kit: 1 x 8" Steel Brake Disc for 1" Axle 1 x Mechanical Brake Caliper 1 x Brake Cable Retainer 1 x Brake Cable Return Spring 1 x Floating Caliper Mounting Bracket (shown below)
Below are photos of a typical installation for this kit on a Barstool Racer.
47.79 USD



Brake Cable & Housing 60"
Modèle 1752
The cable is 60" in length, .075" diameter with a 3/8" barrel on one end. The cable housing is 55" in length.
This brake cable has been design to work with our Hand Brake, Part Number: 1731
3.47 USD



Brake Cable Retainer
Modèle 2372
Our brake cable retainer is used as a holder for the end of the brake cable on a mechanical brake caliper setup.
The brake cable retainer comes with all necessary hardware to safely and securely mount the cable retainer to your setup.
Specifications: Length: 1" Threads: 5/16" X 24
Below is a photo of a typical mechanical brake caliper setup using this brake cable retainer.
1.27 USD



Brake Caliper Floating Mount
Modèle 21797M
This brake caliper mount is designed for our mechanical brake caliper #BS21797. This mount will allow the caliper to "float" inside the mount while giving you maximum stopping power.
With this mounting bracket, you can weld the mount right to your frame or you can weld a mounting bracket to your frame and bolt the caliper mount directly to the frame mount.

13.90 USD



Brake Caliper Return Spring
Modèle 2390
Our brake caliper return spring is used to return the brake caliper arm back to the open position and can be used on our Mechanical Brake Caliper Part Number: BS21797
The spring is designed to slip over the cable and fit in between the conduit retainer and mechanical brake arm.
The spring can also be used with other mechanical brake calipers, please be sure to check your application before purchasing.
Below is a photo of a typical setup using this return spring on our mechanical brake caliper.

0.69 USD



Brake Caliper with Pads
Modèle 21797
Mechanical Disc Brake Caliper with Pads.
If you're looking for excellent stopping power without having to spend the money for a hydraulic setup, this mechanical brake caliper will do the job. This caliper is a "floating" style caliper and we recommend you purchase the caliper mounting bracket #BSCALMT for best performance.
Installation is simple; just mount the caliper and hook of the brake cable. No need to bleed brake lines because it is mechanical.
Below are photos of a typical mounting setup for this type of mechanical caliper. This brake caliper now has a mounting bracket #BSCALMT which allows the brake caliper to float in the mount for maximum stopping power.
17.40 USD



Brake Disc 8" for 1" Axle
Modèle 1823
This is the standard 8" brake disc for mechanical or hydraulic brake calipers.
The brake disc comes with a set screw to lock the disc to the axle and will fit all 1" axles.
This disc will work with our Mechanical Brake Caliper Part Number: BS21797
Don't forget you will need some 1/4" key stock for the brake disc Part Number: 8403-6
18.53 USD



Brake Lever Heavy Duty 7/8"
Modèle 1731
This rugged hand brake lever is stamped and shaped mild steel. Unlike cast handles these will bend rather than fracture. The split mounting collar is strong yet narrow to allow its positioning closer to curves and bends in handle bars.
This brake lever will work great on barstool racers with a steering handle bar.
The Heavy Duty Brake Lever will work great with our 5/8" X 36" Steering Kits, Part Number: STKIT1 or any 7/8" handle bar.
10.97 USD



Deluxe Parts Kit
Modèle 901
<p>Save yourself time and money with our Deluxe Parts kit!</p> <p>Our&nbsp;Dexlue Parts Kit comes with everything you need to finish off your Barstool Racer if you had purchased a Barstool Racer Frame Kit from us.&nbsp;Al the parts needed are in this kit except the following:</p> <p>The Engine The Barstool The Rims and Tires The Clutch / TAV Steering Shaft & Handle Bar (included in our frame kit)</p> <p>This&nbsp;parts kit&nbsp;was&nbsp;put together for&nbsp;a person that has&nbsp;purchased&nbsp;or&nbsp;is going to purchase a Barstool Racer Frame Kit from us.&nbsp;&nbsp;The&nbsp;only difference in this kit from the Master Parts&nbsp;Kit, is the parts&nbsp;that&nbsp;already come with our frame kits are not included with this kit.&nbsp;</p> <p>If you already have your frame or you are going to build your own frame, we recommend getting our Master Parts Kit #900.&nbsp;The Master Parts Kit contains additional parts that the Deluxe Kit does not have.</p>
324.90 USD



Master Parts Kit
Modèle 900
<p>Save yourself time and money with our&nbsp;Master Parts kit!</p> <p>Our&nbsp;Master Parts Kit comes with everything you need to build a Barstool Racer except for the following:</p> <p>The Engine The Barstool The Rims and Tires The Clutch / TAV Steering Shaft & Handle Bar</p> <p>This is out most complete parts kit and&nbsp;we recommend using this kit if you already have a barstool racer frame or you are going to build you own frame.&nbsp;</p> <p>If you would like to use a T style steering wheel you&nbsp;can add our 5/8" Steering Shaft #112 and our 7/8" Steering Handle Bar #115 to your order.&nbsp;</p> <p>If you are purchasing a Barstool Racer Frame Kit from us, we have created a special parts kit called the Deluxe Parts Kit #901.&nbsp;The only difference with the Deluxe Parts Kit is that the frame kit already&nbsp;comes with&nbsp;some of the parts included in the Master Parts Kits and we have removed those parts from&nbsp;the Deluxe Parts Kit&nbsp;to save you money.</p>
335.27 USD



Spindle Kit Side 1
Modèle 2237-K2
<p>This kit has all the parts you need to mount a steering spindle on your barstool racer or go kart.</p> <p>The kits come complete with the spindle mount bracket, spindle, king pin and nut, spindle spacer and spindle nut.</p> <p>Specs: 5/8" X 4 1/2"</p> <p>If you are building a new frame you will need both kits (side 1 and side 2)</p>
14.29 USD



Spindle Kit Side 2
Modèle 2238-K2
This kit has all the parts you need to mount a steering spindle on your barstool racer or go kart. The kits come complete with the spindle mount bracket, spindle, king pin and nut, spindle spacer and spindle nut. Specs: 5/8" X 4 1/2"
If you are building a new frame you will need both kits (side 1 and side 2)
14.29 USD



Spindle Kit Sides 1-2
Modèle 223536K
This kit has all the parts you need to mount both steering spindles on your barstool racer or go kart. The kits come complete with the spindle mount bracket, spindle, king pin and nut, spindle spacer and spindle nut. Specs: 5/8" X 4 1/2"
If you are building a new frame, then this kit is your best value.
26.78 USD



Steering Kit - 5/8" X 36"
Modèle 110K
This steering kit come with everything you need to put together your steering system. The shaft is made from 5/8" solid steel rod and comes 36" in length and the handle bar is made from 7/8" steel tubing. We have also include the pitman arm to finish off the kit. The kit comes unwelded. Custom lengths are also available, please call for pricing. Depending on on your setup, you may also need a 5/8" Locking Collar to lock the steering shaft in from moving. The part number for the locking collar is 8555.
13.83 USD



Throttle Assembly Kit 7/8"
Modèle 2352
The throttle assembly kit comes with a 54" flexible throttle cable covered by spiral steel, vinyl covered housing. They feature crome plated mounting cases and self-lubricating bearing surfaces for long trouble-free service. The throttle asembly kit will work great with our 5/8" X 36" Steering Kits, Part Number: STKIT1 or any 7/8" handle bar.
21.61 USD



Wheel Hub Kit 1" X 5/8"
Modèle H103K
Our Wheel Hub Kits are CNC machined from 6061 T-6 aluminum for strength and accuracy. The hubs have a 2-1/4" bolt circle to fit Circle, Van-K, Douglas and other popular rims that have the standard U.S. pattern.
This kit includes: 2 - Front 5/8" Hubs 2 - Rear 1" Hubs 4 Wheel Hub Bolt Kits
The Front Hubs come with the 5/8" bearings installed and the Rear Hubs will fit any 1" axle. The Front hubs will fit perfectly with any of the front spindles or spindle kits we sell.
If you're building a new Barstool Racer or Go-Kart, this kit is your best value and includes everything you need to mount all 4 wheels.
59.50 USD



Wheel Hub Kit 1-1/4" X 5/8"
Modèle H104K
Our Wheel Hub Kits are CNC machined from 6061 T-6 aluminum for strength and accuracy. The hubs have a 2-1/4" bolt circle to fit Circle, Van-K, Douglas and other popular rims that have the standard U.S. pattern.
This kit includes: 2 - Front 5/8" Hubs 2 - Rear 1-1/4" Hubs 4 Wheel Hub Bolt Kits
The Front Hubs come with the 5/8" bearings installed and the Rear Hubs will fit any 1-1/4" axle. The Front hubs will fit perfectly with any of the front spindles or spindle kits we sell.
If you're building a new Barstool Racer or Go-Kart, this kit is your best value and includes everything you need to mount all 4 wheels.
59.50 USD

Apparel



T-Shirt Black & Red Barstool Racing

Modèle TS0002

NEW DESIGN FOR 2006!

If you're a fan of Barstool Racers or Barstool Racing, then this shirt is a must have!

Our shirts come in sizes of Large, X-Large, and XX-Large. Select your size from the drop down box below.

14.95 USD



T-Shirt Black & White Barstool Racing

Modèle TS0003

NEW DESIGN FOR 2006!

If you're a fan of Barstool Racers or Barstool Racing, then this shirt is a must have!

Our shirts come in sizes of Large, X-Large, and XX-Large. Select your size from the drop down box below.

14.95 USD

Product name	Category	Page
Axle & Bearing Kit for 1" Axle	Drive Train	5
Axle & Bearing Kit for 1" Axle	Part Kits	20
Axle Steel 1" X 30"	Drive Train	5
Bearing Rear for 1" Axle	Drive Train	6
Bearing Hanger 3 Hole for 1" Axle	Drive Train	6
Bearing Flangette Bolt Kit for 1" Axle	Drive Train	5
Bearing Kit for 1" Live Axles	Drive Train	6
Bearing Flangette 3 Hole for 1" Axle	Drive Train	5
Bearing Kit for 1" Live Axles	Part Kits	20
Brake & Caliper Kit for 1" Axle	Brake Componets	18
Brake & Caliper Kit for 1" Axle	Part Kits	20
Brake Cable & Housing 60"	Brake Componets	18
Brake Cable & Housing 60"	Steering	13
Brake Caliper with Pads	Brake Componets	19
Brake Caliper Return Spring	Brake Componets	19
Brake Cable Retainer	Brake Componets	18
Brake Caliper Floating Mount	Brake Componets	18
Brake Disc 8" for 1" Axle	Brake Componets	19
Brake Lever Heavy Duty 7/8"	Brake Componets	19
Brake Lever Heavy Duty 7/8"	Steering	13
Chain #35 - 5 Feet	Drive Train	6
Chain #35 Master Link	Drive Train	6
Chain #35 Offset Link	Drive Train	6
Chain #41 Master Link	Drive Train	7
Chain #41 - 5 Feet	Drive Train	7
Chain #41 Offset Link	Drive Train	7
Deluxe Parts Kit	Drive Train	7
Deluxe Parts Kit	Part Kits	21
Deluxe Parts Kit	Steering	13
Engine Mount Plate 5" X 12"	Drive Train	7
Keystock 1/4" X 6"	Drive Train	8
Kingpin & Nut 5/8" 18 X 3-3/4"	Steering	13
Lock Collar Steel for 1" Axle	Drive Train	8
Lock Collar Steel 5/8"	Steering	14
Master Parts Kit	Drive Train	8
Master Parts Kit	Part Kits	21
Master Parts Kit	Steering	14
Pitman Arm 5/8"	Steering	14
Plans - Classic Cruiser (Adobe PDF)	Plans	2

Plans - Pro Street Cruiser (Hardcopy 62 Pages)	Plans	4
Plans - Classic Cruiser (Hardcopy 62 Pages)	Plans	3
Plans - Pro Street Cruiser (Adobe PDF)	Plans	3
Spindle Kit Sides 1-2	Steering	16
Spindle Kit Side 2	Steering	15
Spindle Kit Side 2	Part Kits	22
Spindle Kit Sides 1-2	Part Kits	22
Spindle Bushings 5/8" (2)	Steering	15
Spindle Kit Side 1	Steering	15
Spindle Kit Side 1	Part Kits	21
Spindle Arm Side 2	Steering	15
Spindle Arm Side 1	Steering	14
Spindle Bracket 5/8" Holes	Steering	15
Sprocket Hub Heavy Duty - 1" Axle	Drive Train	10
Sprocket 54 Tooth #41 Chain (5.25" Bolt Circle)	Drive Train	9
Sprocket 40 Tooth #41 Chain (5.25" Bolt Circle)	Drive Train	9
Sprocket 40 Tooth #41 Chain (4.00" Bolt Circle)	Drive Train	9
Sprocket 54 Tooth #41 Chain (4.00" Bolt Circle)	Drive Train	9
Steering Kit - 5/8" X 36"	Steering	16
Steering Handle Bar 7/8"	Steering	16
Steering Kit - 5/8" X 36"	Part Kits	22
Steering Shaft - 5/8" X 36"	Steering	16
T-Shirt Black & Red Barstool Racing	Apparel	24
T-Shirt Black & White Barstool Racing	Apparel	24
Throttle Assembly Kit 7/8"	Steering	16
Throttle Assembly Kit 7/8"	Part Kits	22
Tie Rod 9.0" - Tubular Steel	Steering	17
Wheel Hub Kit 1" X 5/8"	Part Kits	23
Wheel Hub Kit 1-1/4" X 5/8"	Part Kits	23
Wheel Hub Front 5/8"	Steering	17
Wheel Hub Rear 1"	Drive Train	11
Wheel Hub Rear 1-1/4"	1-1/4" Drive Train	12
Wheel Hub Kit 1" X 5/8"	Drive Train	10
Wheel Hub Front 5/8"	Drive Train	10
Wheel Hub Bolt Kit - 1/4" Rear	Drive Train	10
Wheel Hub Kit 1-1/4" X 5/8"	1-1/4" Drive Train	12
Wheel Hub Bolt Kit - 1/4" Front	Drive Train	10